

# MONTHLY MEMBERSHIP PROGRESS REPORT

LOCATION NIGERIA

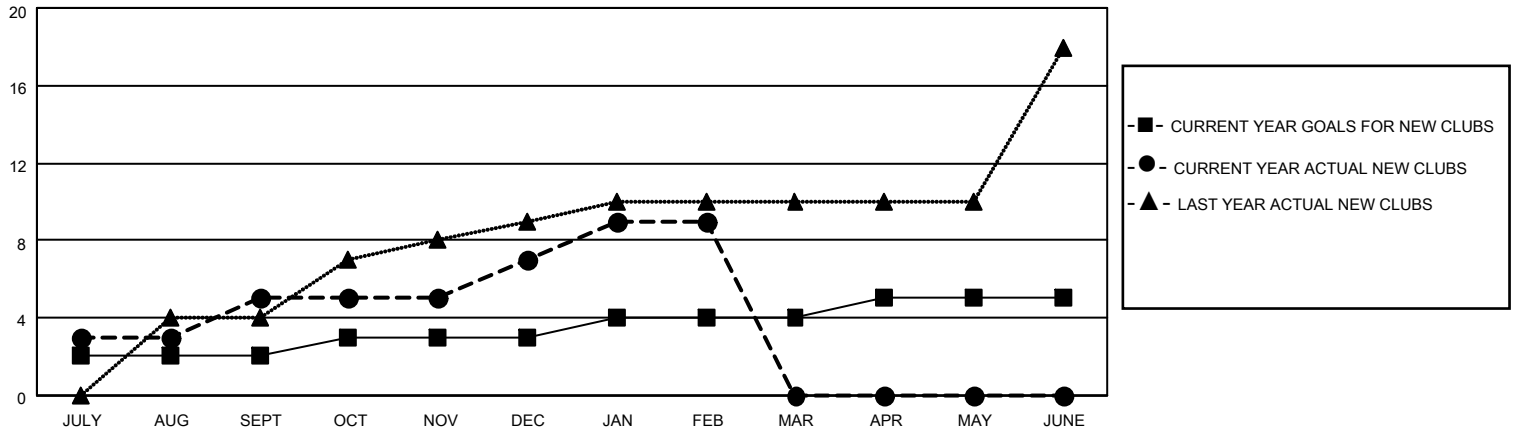
District 404 B1

Results as of: 2/28/2023

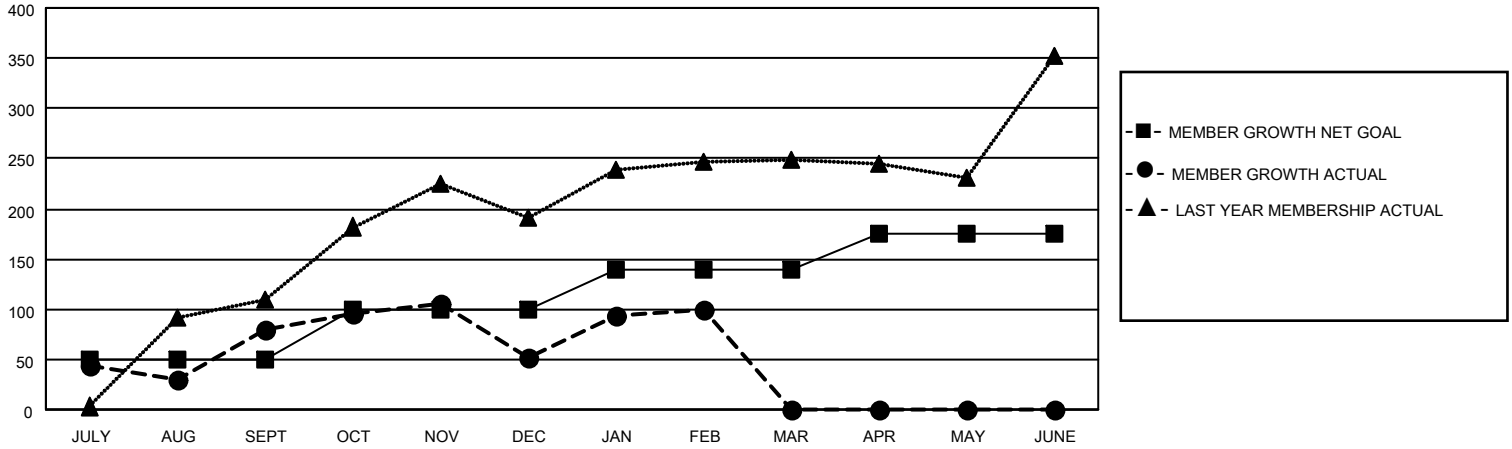
Clubs			
RESULTS FOR 2022-2023			
QUARTER	NEW CLUB GOAL	NEW CLUBS	DROPPED CLUBS
JULY/AUG/SEPT	2	5	2
OCT/NOV/DEC	1	2	7
JAN/FEB/MAR	1	2	0
APR/MAY/JUNE	1	0	0

Members			
RESULTS FOR 2022-2023			
QUARTER	MEMBER GROWTH NET GOAL	MEMBER GROWTH ACTUAL	DROPPED MEMBERS ACTUAL (including transfers)
JULY/AUG/SEPT	50	188	95
OCT/NOV/DEC	50	292	287
JAN/FEB/MAR	40	85	35
APR/MAY/JUNE	35	0	0

**GOALS AND ACTUAL NEW CLUBS CUMULATIVE**



**GOALS AND ACTUAL MEMBERS CUMULATIVE**



**DROPPED CLUBS: 9**

**87 CLUBS OF 130 ADDED 1 OR MORE NEW MEMBERS**

**GENDER DISTRIBUTION**

**DROPPED MEMBERS**

DECEASED	7
CLUB CANCELLED	104
OTHER	306
<b>TOTAL</b>	<b>417</b>

[CLICK HERE FOR CUMULATIVE MEMBERSHIP DATA](#)

MALE	1,985 (63.32%)
FEMALE	1,149 (36.65%)
NON BINARY	0 (0.00%)
PREFER NOT TO ANSWER	1 (0.03%)

TOTAL FAMILY UNIT MEMBERS 272

FAMILY MEMBERS PAYING HALF DUES 144